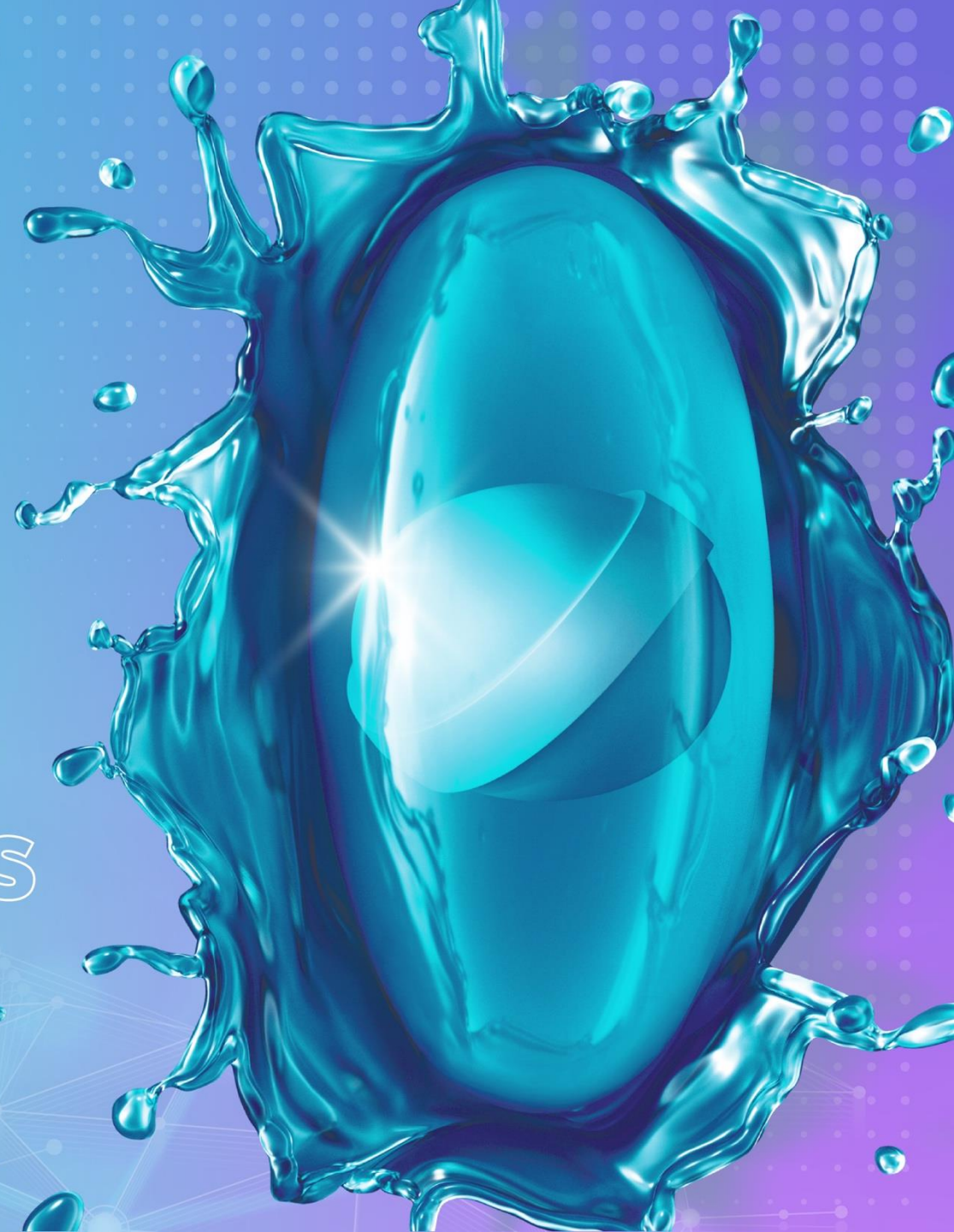




Experts in the  
**science** behind  
**Smart** softgels





The title 'iCDMO BUSINESS' is centered within a white, rounded rectangular frame that has a dashed white border. The background of the slide is a gradient from blue to purple, featuring a faint world map and a network of white dots and lines. There are also dynamic water splash effects in the top right and bottom left corners.

iCDMO  
**BUSINESS**



## STRATEGY

**Integrated, differentiated Taylor Made solutions with Procaps technologies.**

B4B relationship through an exceptional and flexible service that generates loyalty, growth and global expansion.

## We are an iCDMO

- **Integrated end-to-end solutions**

From the **conception of the idea to the implementation of the product** with its line extensions to market.

- **Developments**

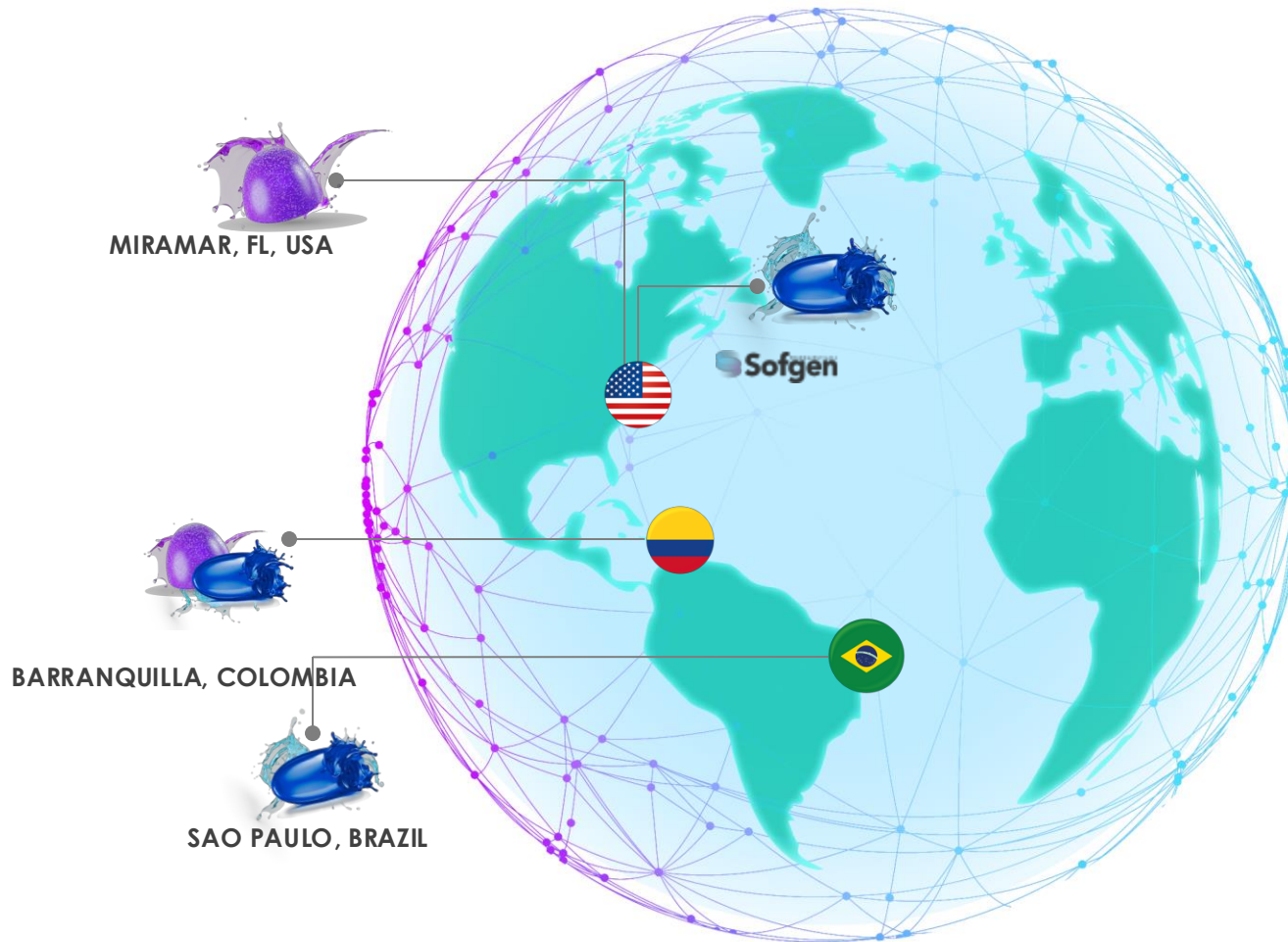
**Development services** for product launching.  
**Knowledge in formulation and analytical R&D.**

- **Manufacturing**

Turnkey **manufacturing of products**

# Your Global CDMO Partner

Focused on offering end-to-end solutions to serve our customers' needs



- 5 best-in-class manufacturing sites across North and South America
- delivery formats and technologies for both nutritional and pharmaceutical products
- 4 Development hubs & 2 Inspiration Centers with specialized capabilities
- Dedicated team of experts
- Industry-Leading Pharmaceutical Quality & Compliance Systems
- Excellent Regulatory & Safety Track Record



A large, stylized graphic of the Sofgen Pharmaceuticals logo, consisting of a white double-line border forming a rounded diamond shape. The background is a gradient of blue and purple with a network of white dots and lines. There are two water splash effects: one in the top right corner and one in the bottom left corner, both in shades of blue and purple.

# SOFGEN

## PHARMACEUTICALS

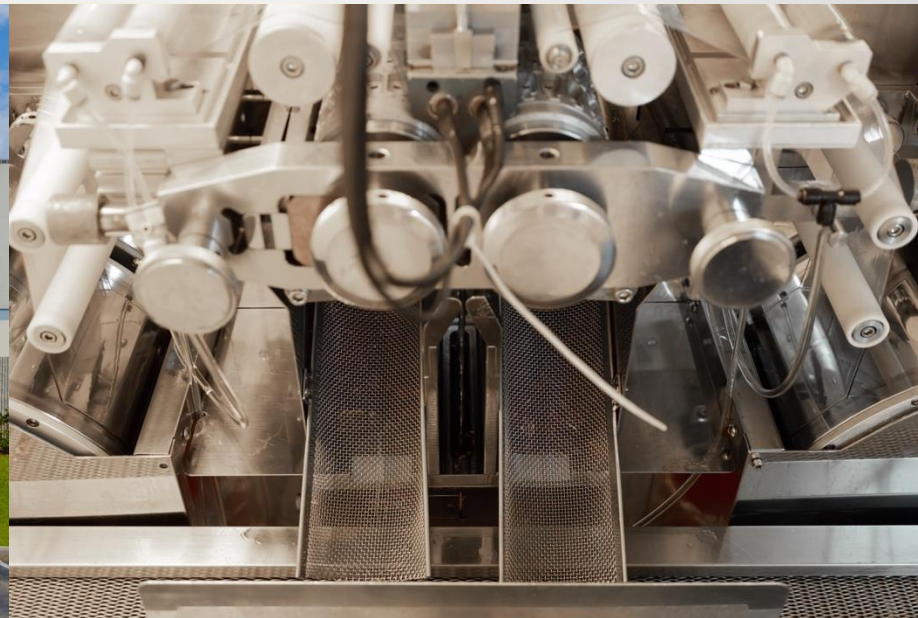


# SOFGEN PHARMACEUTICALS

We are an integrated CDMO that offers end-to-end solutions, from development throughout delivery, in innovative Softgel technologies for pharma and healthcare companies interested in launching novel products within North America and other Highly regulated markets.

## OUR PURPOSE

To provide an **unparalleled experience** with reliable development manufacturing services and niche proprietary products, innovation in technologies, contributing to health and well-being of consumers and patients in key markets.



# WHY SOFGEN Pharmaceuticals?

*Specialized in the Development and manufacturing of Softgel and advanced technologies for **Generics, Rx, Otc, and Specialized Nutraceuticals.***



**Innovation led**, focused on **advanced softgel technologies.**



Experience in **Tech-Transfers**, emphasized in **quality assurance** and **time-to-market.**



**Client-centered experience model** based on flexibility, connectivity, trust and empathy.



Experts in the development of **NCEs in Softgel technologies** for specialized and complex molecules, as well as regulatory knowledge and support for **New Drug Applications**



Strong and **proven capabilities** to develop landmark products under strict **cGMP environment.**



Extensive knowledge, robust system, and state-of-the-art facilities for handling **High Potent Compounds**, including **hormonal products** and other **complex oral modalities.**



Multi-Site Manufacturing and development capabilities **achieving supply chain efficiency.**





ADVANCED  
**SOFTGEL**  
TECHNOLOGIES



# SoftGels

## Superior Dosage Form SINCE 1977

The softgel capsule (SGC) has been on the market **since the 19th century evolving to the present day**. Because of this consumers feel familiar with the technology, trusting in its **efficiency, robust quality control and convenience**.



### Key SGC CHARACTERISTICS

- Enhance bioavailability of active ingredients
- **Attractive** physical appearance
- Greater **Stability**
- Dosage **Accuracy**
- **Temper resistant** / Hermetically **Sealed**
- **Masks Unpleasant** odors and flavors
- **Consumer preferred dosage form** (easier to swallow than traditional dosage forms) (2)

### Main SGC APPLICATIONS

- **Pharmaceutical:** Products for any type of indication (OTC and Rx)
- **Nutritional:** Supplements, vitamins, concentrates and other natural products
- **Cosmeceuticals:** Cosmetic products that have medicinal properties

1 BCS Class II – low solubility / high permeability.

BCS Class III – high solubility / low permeability.

BCS Class IV – low solubility / low permeability. Mattson Jack

2 Group survey to 300 consumers in 1999, Softgel capsules market analysis & trends applications (October 2016)



# unigel<sup>TM</sup>

**Unigel<sup>TM</sup>**, Patent technology, a **first-to-market Technology** Is Ideal for Organizations who want their consumers to have **simplicity and effectiveness** backed by **technology and expertise when taking their meds and supplements**.

Unigel<sup>TM</sup> provides **different configurations for fixed-dose combinations**. It permits multiple ingredients that are chemically incompatible to coexist in one softgel.

## Key UNIGEL<sup>TM</sup> BENEFITS

- ◊ Clear look inside the capsule/ Physically Appealing
- ◊ Different Release Profiles available
- ◊ Combines Multiple Purpose Ingredients in one form
- ◊ Different Gelatin formulations/Suitable for Vegetarians and/or vegan diets
- ◊ Improves Patient/consumers convenience and Compliance
- ◊ Impossible to counterfeit
- ◊ Exact Dosage Form
- ◊ Diversifies Portfolio/Enables Brand Differentiation





# Chew gels



Discover our Chewable Softgel Platform **Chewgels™**, **chewable soft capsules** as a solution and line extension to existing or new products. With new ingredients, special shapes and flavors, we can offer our customers a range of formulations for different therapeutic lines.

## Key CHEWGELS™ ADVANTAGES

- ◆ **Soft and easy chewable flavored gelatin shell**, that does not leave residues or sticks to the teeth
- ◆ **No sugar-added**
- ◆ **Shell solubility** and stability assurance
- ◆ **Portable exact dose form**: the fill content may contain solutions, suspensions, pastes and emulsions.

- ◆ **Non sticky softgel** due to its drying process.
- ◆ **Lipid coating of the API** for special taste masking applications.

## Key CHEWGELS™ CONSUMER BENEFITS

- ◆ **No water needed**: Taken easily on the run without water or food.
- ◆ **Easy to swallow**: Suitable for children or senior adults who often reject traditional dosage forms.

- ◆ **Fast effect**: Immediate release and absorption in the mouth and stomach.
- ◆ **Great taste & Experience**: Our Chewgels™ Once a Chewgel enters the mouth, it is chewed, and a burst effect of the sweet, creamy and tasty liquid inside kicks in. This explosion of flavor is accompanied by the activation of the ingredients.

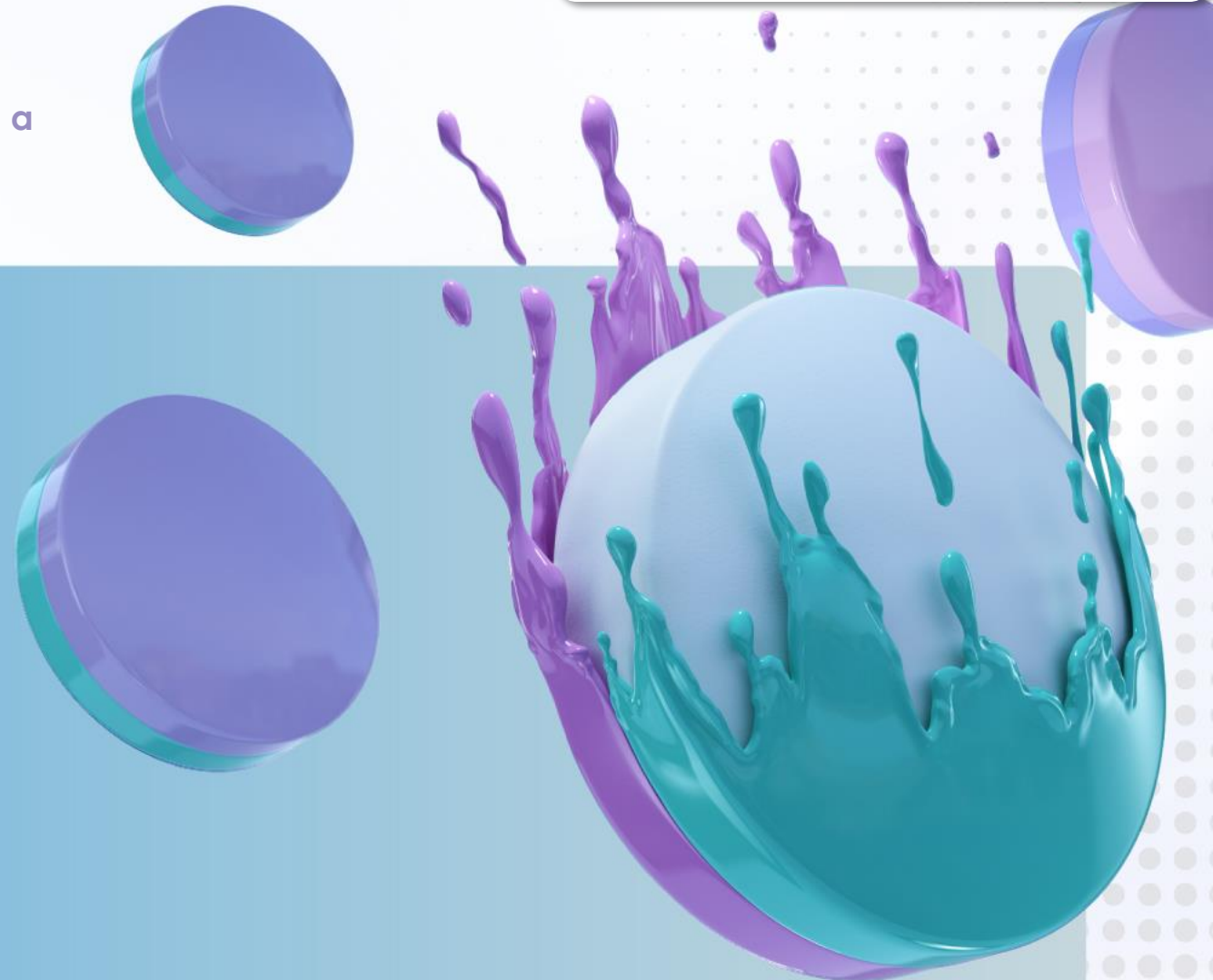




Technology that coats compressed tablets with a two-toned color gelatin that protects the pill.

### Key G-TABS™ ADVANTAGES

- = Easy to Swallow
- = Custom Branding/ Personalization
- = Prevents Counterfeiting
- = Tamper-Evident
- = Masks unpleasant flavors and Odors.
- = Improves Stability of photosensitive APIs
- = Softgel-like Appearance
- = Ideal for **double-blind Clinical Studies.**
- = Ideal for drug substances that can irritate the oesophageal mucosa when they are incorporated in an immediate-release tablet





# Vaogels

The softgel vaginal ovule or insert, Vaogels, was designed with mucoadhesive properties to facilitate retention of the product in the vagina and availability of the active ingredient in a site-specific manner.

## Key Vaogels ADVANTAGES

- **Conical Shape** for easy application
- **Softgel Hydrophilic** outer layer
- **Improves treatment efficiency**
- Greater **dissolution/Faster disintegration**
- Exact Dosage
- **Lipophilic Exipients** for better vaginal adherence and efficacy.
- **Gentle and non-irritating**
- **Stable Until Inserted**



# Twistgels

A soft gelatin **capsule with a twist-off cap** allowing access to a measured dose for topical and/or oral applications.

## Key Twistgels ADVANTAGES


- Better Dosage Accuracy
- Eliminates contamination by repeat use
- Improves Compliance
- Improved Stability

## Key Twistgels CONSUMER BENEFITS

- Portable, on-the-go
- Easy to twist – Ideal for geriatric, Pediatric and Veterinary use
- Custom shapes, sizes and colors
- No water Needed





A large, dynamic splash of teal-colored water on the left side of the page, with several droplets and a bright reflection on the main splash.

For more information about Sofgen Pharmaceuticals  
visit:  
[www.sofgenpharma.com](http://www.sofgenpharma.com)